

Butler County Community College, Butler, PA

# BC3 College Report Card

Performance on College Goals

Assessment, Research and Planning Division



2011-12

Final

August 27, 2012

BC3 College Report Card  
2011-2012

This BC3 College Report Card shows the performance of the College on seven institutional goals for fiscal year 2011-2012. There are 28 metrics with targets that are used to measure goal attainment on Student Success, Learning, Employee Development, Physical Environment, Fiscal Responsibility, Communication and Community Service. There are also 21 measures in the “Trends to Keep an Eye on” category.

The data for this report is compiled by the Assessment, Research and Planning Division from the various units, departments, division, and college database in the college. All questions about this report should be directed to the Dean of Assessment Projects, Dr. Sunday O. Faseyitan.

Thank you.

SOF

BC3 College Report Card  
2011-2012

**Performance on College Goals**

Goals with Targets

Student Success

Learning

Employee Development

Physical Environment

Fiscal Responsibility

Communication

Community Service

Trends to Keep an Eye on

Student Success

Learning

Employee Development

Physical Environment

Fiscal Responsibility

Communication

Community Service

## BC3 College Report Card 2011-2012

Metric	Definition	Target	BC3 Score	
<b><u>Goal: Student Success</u></b>				
1. Graduation Rate	IPEDS cohort first-time, full-time who complete within 150% time	Exceed peer group = 15%	12%	↓
2. Retention Rate	IPEDS fall-to-fall First-time, full-time	53%	53%	↔
	First-time, part-time	32%	29%	↓
3. Tutoring success	Percent of students using tutoring service that receive a "c" grade or better	70%	Fall 2011 73%; Spring 2012 74%	↔ ↔
4. Service Excellence	2011 Noel-Levitz Student Satisfaction Inventory	Exceed national peer group mean = 5.28	5.33	↔
5. Support for Learners	2012 CCSSE item "providing the support you need to succeed in this college"	Exceed small colleges peer group median = 3.04	3.11	↔
6. Service outcomes	2012 Student Services Survey on Admissions, Registration, ACE, Financial Aid, Student Life	80% satisfaction	Overall average 85.09%; Dept. range 83.14%-87.60%	↔
<b><u>Goal: Learning</u></b>				
7. Degree Completion; Successful Transfer	2011 NCCBP completion within 150% time	BC3 will be among the top five	11 <sup>th</sup>	↓
	First-time, full-time complete		9 <sup>th</sup>	↓
	First-time, part-time complete		1 <sup>st</sup>	☆
	First-time, full-time transfer		2 <sup>nd</sup>	☆
8. Pass Rate on Licensure exams	Licensure exam for Nursing and PTA	85%	Nursing = 91.5%;	☆
			PTA = 93.5%	☆
9. General Education Assessment	Assessment of at least one General Education Core competency	1	Math Science	↔
10. Active & Collaborative Learning	2012 CCSSE Benchmark	Small colleges peer group median = 51.4	46.2	↓

## BC3 College Report Card 2011-2012

Metric	Definition	Target	BC3 Score	
<b><u>Goal: Learning (cont.)</u></b>				
11. Instructional Effectiveness	2011 NCCBP data using Noel-Levitz SSI benchmark	Exceed PA peer median = 5.50	5.40	↓
12. Student-Faculty Interaction	2011 NCCBP data using CCSSE Benchmarks	Exceed PA peer median = 51.5	43.8	↓
<b><u>Goal: Employee Development</u></b>				
13. Well-being and Professional Development	Percent of participants indicating enhanced well-being and professional development	80%	7 events > 80% 3 events < 78%	📄
14. Advanced Academic degree for employees	Percent of participants making progress toward degree attainment by taking maximum number of credits per fiscal year	25%	58%	☆
15. Credit and non-credit educational opportunities for employees.	Percent increase over previous year of employees taking credit or non-credit classes	2%	-5%	↓
<b><u>Goal: Physical Environment</u></b>				
16. Backfill Plan	Percent of Backfill Plan projects completed by 6/30/12	100%	95%-98% completed	📄
17. Safety, Security and Comfort levels.	Percent of survey respondents who feel safe, secure, and comfortable at a BC3 campus site. Response to "In general, I believe that this campus is safe."	90%	97%	☆
18. Safety and Security	2011 Noel-Levitz Student Satisfaction Inventory	Exceed national peer group median = 5.00	5.06	📄
<b><u>Goal: Fiscal Responsibility</u></b>				
19. Tuition and fees per credit hour	2011 NCCBP rating of tuition and fees among PA Community Colleges	BC3 will be among the lowest five	4th lowest	📄
20. Market Penetration for credit and non-credit students	2011 NCCBP rating of market penetration among PA community Colleges	BC3 will be among the top five.	Credit 1st; non-credit 1st	☆ ☆
21. Providing Financial Support	2012 CCSSE item "providing the financial support you need to afford your education"	Exceed small colleges peer group median = 2.66	2.70	📄

## BC3 College Report Card 2011-2012

Metric	Definition	Target	BC3 Score	
<b><u>Goal: Communication</u></b>				
22. Information Seeking	2011 Noel-Levitz SSI item "I seldom get the run around when seeking information"	Exceed national peer group rating = 5.09	5.25	☆
23. Instructor Feedback	2012 CCSSE item "received prompt feedback from instructors on your performance"	Exceed small colleges peer group median = 2.71	2.79	📄
24. Social Media	Number of BC3 Facebook "Likes" by the end of 2011-2012	4,000	3,300	↓
25. Media Placement	Percent of BC3 Press releases used by Butler Eagle including Butler County Business Matters, Pittsburgh Post Gazette, and Pittsburgh Tribune Review	75%	100%	☆

### **Goal: Community Service**

26. Continuing Education Seat Count	Percent increase in the annual seat count in the continuing education division	2%	3%	📄
27. High Priority Workforce Programs	Increase the number of high priority workforce programs by 1 each year	+1	+3	📄
28. Business and Industry Professional Education Certification	Percent increase in the number of Business and Industry Professional Education certificates over the previous year	2%	37.5%	☆

#### Symbols

📄 Target met

↓ Did not meet target

☆ BC3 score is significantly higher than target

BC3 College Report Card  
2011-2012

**Key for College Goals with Targets**

Acronyms

IPEDS: Integrated Postsecondary Education Data System

CCSSE: Community College Survey of Student Engagement

NCCBP: National Community College Benchmark Project

Noel-Levitz SSI: Noel-Levitz Student Satisfaction Inventory

Peer Definitions

IPEDS Peer (metric #1): (SEE APPENDIX)

Noel-Levitz SSI National Peer (metric #4, #18, #22): All community colleges in the study (SEE APPENDIX)

CCSSE National Small Colleges Peer (metric #5, #10, #21, #23): All community colleges in the study with less than 4500 students (SEE APPENDIX)

Noel-Levitz SSI PA Peer (metric #11): All 13 community colleges in Pennsylvania

CCSSE PA Peer (metric #12): All 13 community colleges in Pennsylvania

NCCBP PA Peer (metric #19, #20): All 13 other community colleges in Pennsylvania

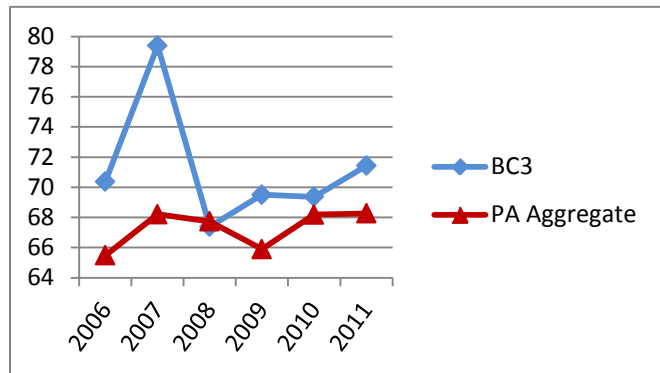
# BC3 College Report Card 2011-2012

## College Goals- Trends to Keep an Eye on

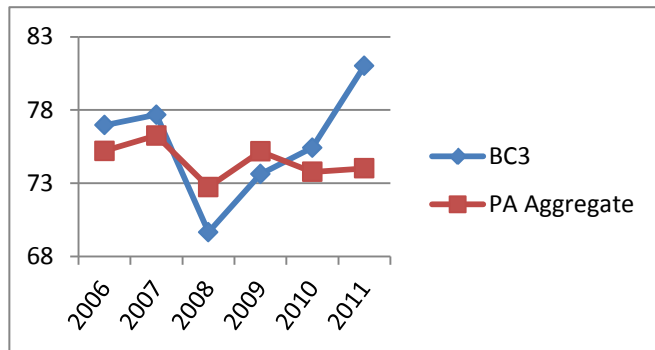
### Student Success

1. Percent course completers data for developmental education – NCCBP (Compare with peers)

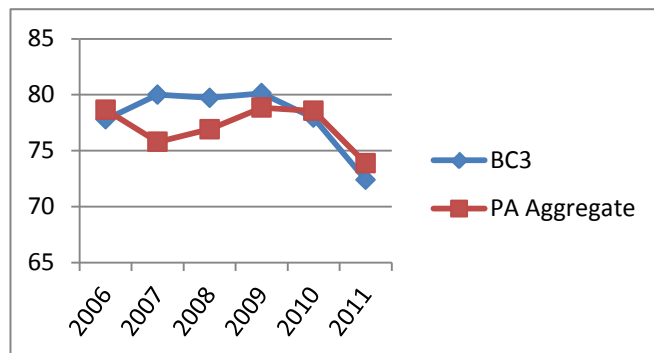
Math		
	BC3	PA Aggregate
2006	70.38	65.49
2007	79.39	68.21
2008	67.38	67.73
2009	69.51	65.90
2010	69.37	68.19
2011	71.43	68.26



Writing		
	BC3	PA Aggregate
2006	76.96	75.20
2007	77.67	76.25
2008	69.65	72.73
2009	73.62	75.17
2010	75.42	73.77
2011	81.02	74.01



Reading		
	BC3	PA Aggregate
2006	77.78	78.66
2007	80.00	75.79
2008	79.71	76.92
2009	80.13	78.85
2010	77.93	78.56
2011	72.39	73.88

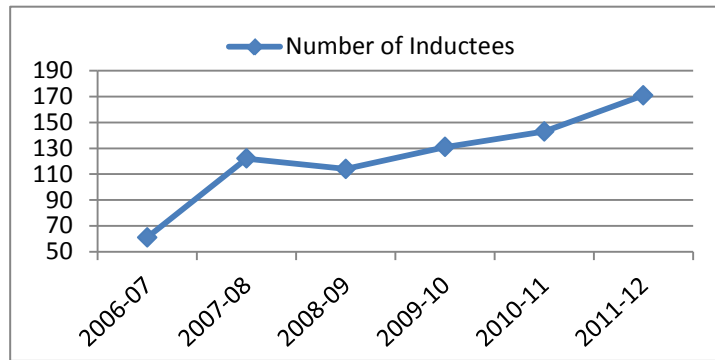




## BC3 College Report Card 2011-2012

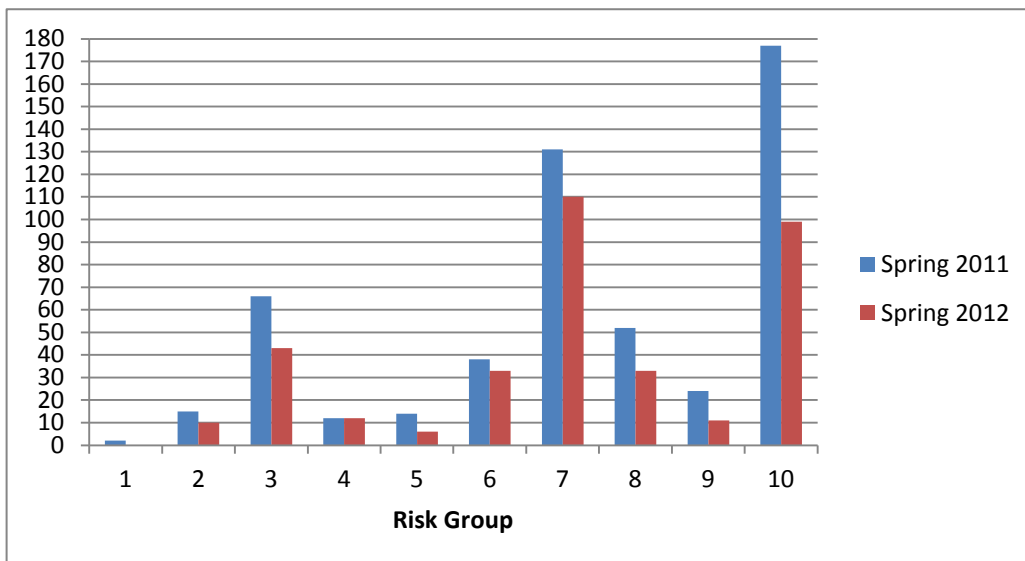
2. Number of students in Phi Theta Kappa - BC3 (Collect baseline data and watch the trend)

	<u>Inductees</u>
2006-07	61
2007-08	122
2008-09	114
2009-10	131
2010-11	143
2011-12	171



3. Students on early alert by risk level Spring 2012 - BC3 (Collect baseline data and watch the trend)

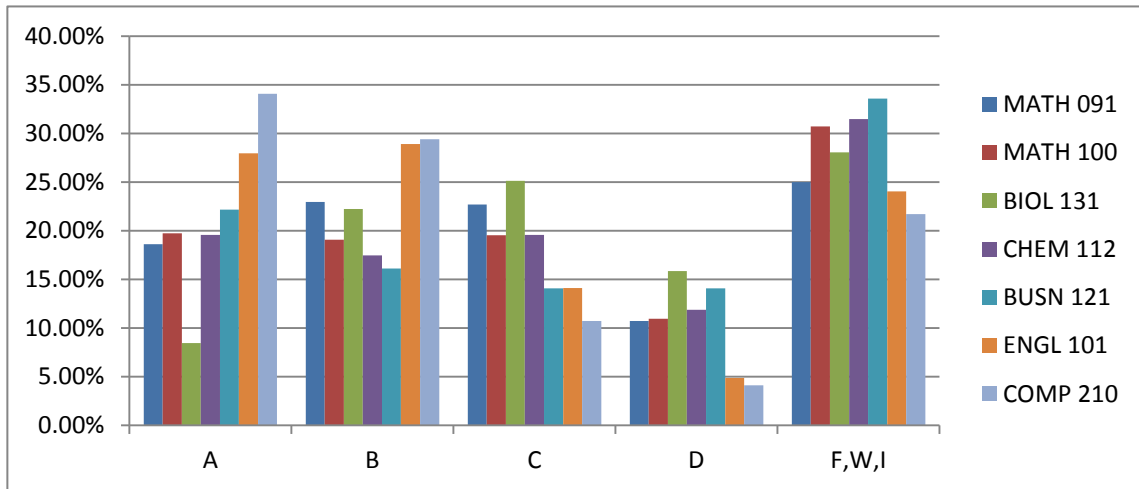
<u>Risk Group Hierarchy</u>	Count		
	<u>2011</u>	<u>2012</u>	
1 In School Youth	2	0	
2 Keys Program	15	10	
3 Students with Disabilities	66	43	
4 Developmental Semester	12	12	
5 Athletes	14	6	
6 Cranberry	38	33	
7 Lawrence Crossing	131	110	
8 LindenPointe	52	33	
9 Smart Start	24	11	
10 Occupational Students	177	99	
11 All Others	388	335	not included on chart
<b>TOTAL</b>	<b>919</b>	<b>692</b>	



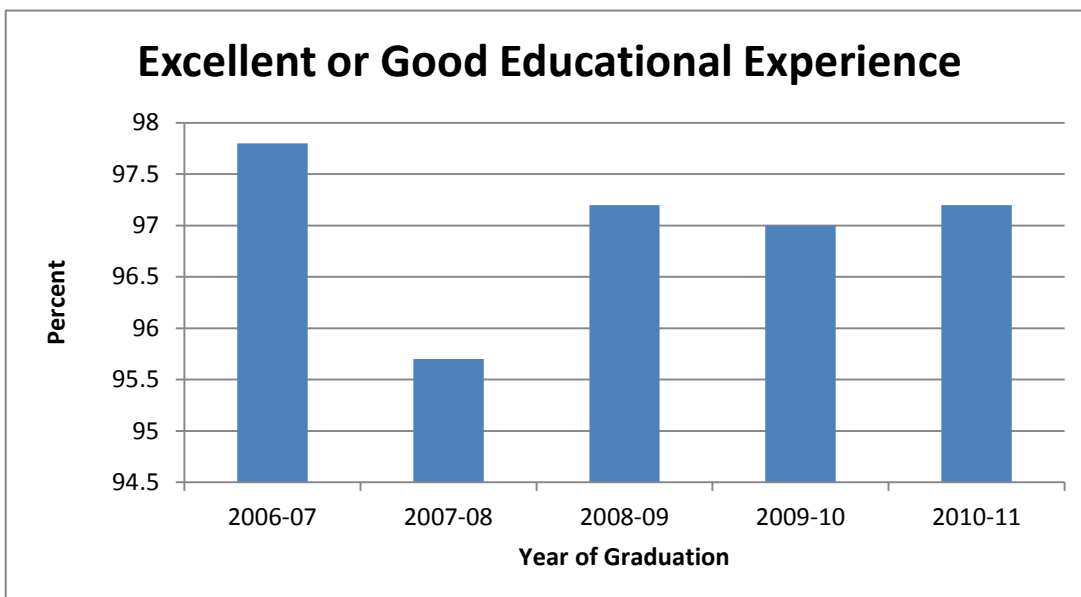
## BC3 College Report Card 2011-2012

4. Pass rate on selected prerequisite courses, Fall 2012 – BC3 (Collect baseline data and watch the trend)

	% of total				
	A	B	C	D	F,W,I
MATH 091	18.62%	22.96%	22.70%	10.71%	25.00%
MATH 100	19.74%	19.08%	19.52%	10.96%	30.70%
BIOL 131	8.47%	22.22%	25.13%	15.87%	28.04%
CHEM 112	19.58%	17.48%	19.58%	11.89%	31.47%
BUSN 121	22.15%	16.11%	14.09%	14.09%	33.56%
ENGL 101	27.96%	28.91%	14.10%	4.86%	24.05%
COMP 210	34.07%	29.40%	10.71%	4.12%	21.70%



5. Overall Educational Experience of graduates -BC3 Graduate Survey item "How would you rate your overall educational experience at BC3?" Percentage of respondents who indicated Excellent or Good.



## BC3 College Report Card 2011-2012

### Learning

6. The number and types of degrees and certificates awarded 2009-10 per thousand enrolled – IPEDS (Compare with peers)

	<u>Per Thousand Enrolled</u>		
	Diploma	Certificate	Associate
BC3	0	6.3	77.9
CCAC	5.1	17.6	81.3
CCBC	0	13.6	118
Westmoreland	33.9	7.4	92.1
Penn Highlands	29.9	5.7	82.4

7. Report of academic programs that completed IEP – BC3 (Report on competencies met/not met)

Forty-eight program competencies were evaluated in 2011-2012. Students met the success criteria in 36 competencies and did not meet the criteria in 12.

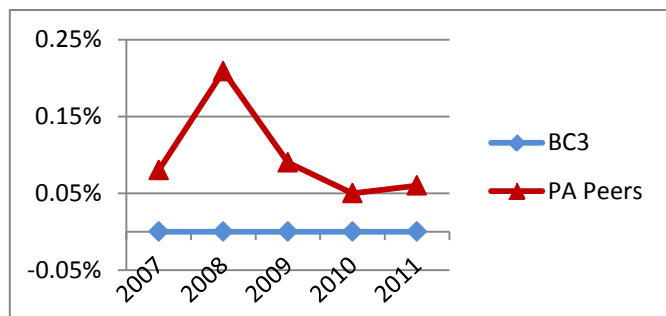
### Employee Development

8. Number of employees participating in personal & professional development programs - BC3 (Collect data and watch the trend)

In Spring 2012 there were three faculty showcases with a total attendance of 41.

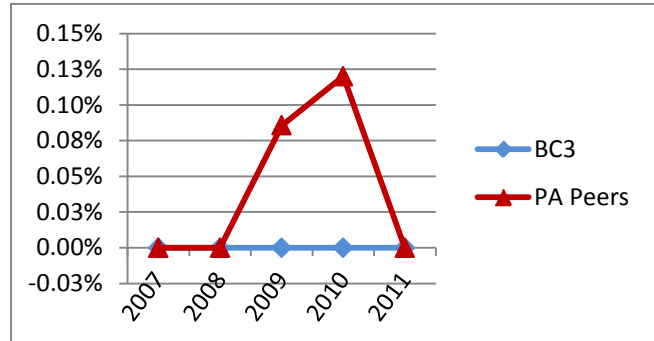
9. Grievances and Harassment Actions – NCCBP (Compare with peers)

Grievances		
	BC3	PA Peers
2007	0	0.08%
2008	0	0.21%
2009	0	0.09%
2010	0	0.05%
2011	0	0.06%



## BC3 College Report Card 2011-2012

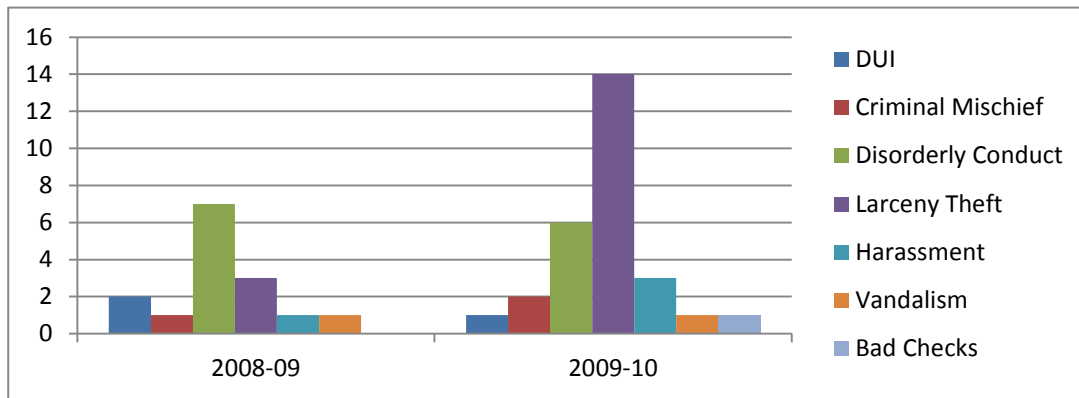
Harassment		
	BC3	PA Peers
2007	0	0.00%
2008	0	0.00%
2009	0	0.0856%
2010	0	0.12%
2011	0	0.00%



### Physical Environment

10. Crime statistics for all College sites – BC3 (Compare with trend data)

	Count	
	2008-09	2009-10
DUI	2	1
Criminal Mischief	1	2
Disorderly Conduct	7	6
Larceny Theft	3	14
Harassment	1	3
Vandalism	1	1
Bad Checks	0	1



11. Review of safety technologies on campus – BC3 (Set target and expected impact, measure impact)

The Director of Campus Security presented a long-range plan to purchase and install additional security cameras along with panic buttons, door release systems and other security upgrades in the Administration Building. Funding was approved. Security cameras were installed at our LindenPointe location during the Fall semester.

## BC3 College Report Card 2011-2012

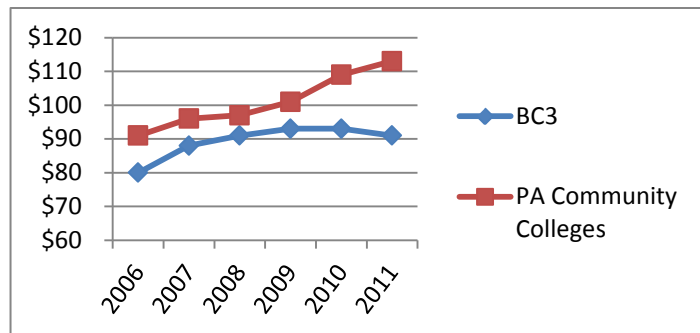
12. Progress on 2009 Master Plan (i.e. facilities, signage, etc.) -- BC3 (Set targets and expected impact, measure impact)

Based on recommendations from the College Signage Committee, five directional signs were placed at strategic locations on the main campus. The signage committee made the following additional recommendations: 1) purchase two additional driving signs to be placed at the south end of campus, 2) create and install campus maps (that possible may be lighted) at 4-5 locations on campus, 3) install parking lot signs that go along with naming the lots as A, B, etc. Funding was approved for the purchase of two additional driving signs and installation occurred in early June.

### Fiscal Responsibility

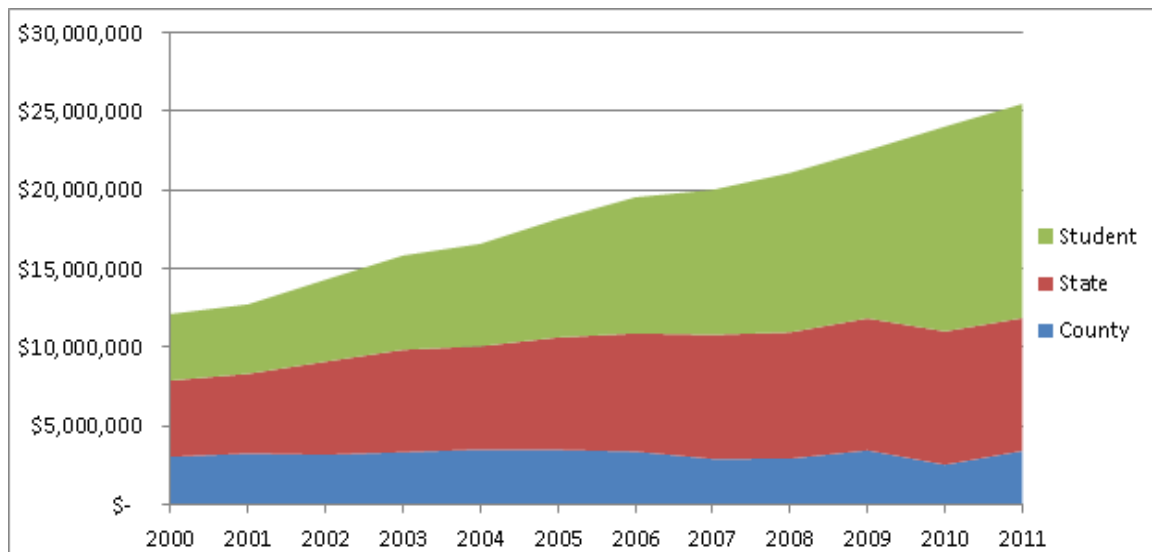
13. Instructional cost per FTE (Includes tuition and fees per credit hour) - NCCBP (Compare with other PA CC)

	BC3	PA Peers
2006	\$80	\$91
2007	\$88	\$96
2008	\$91	\$97
2009	\$93	\$101
2010	\$93	\$109
2011	\$91	\$113



14. Overall mix of financial resources – BC3 (Target and analyze)

Revenue Trends 2000-2011



## BC3 College Report Card 2011-2012

### Communication

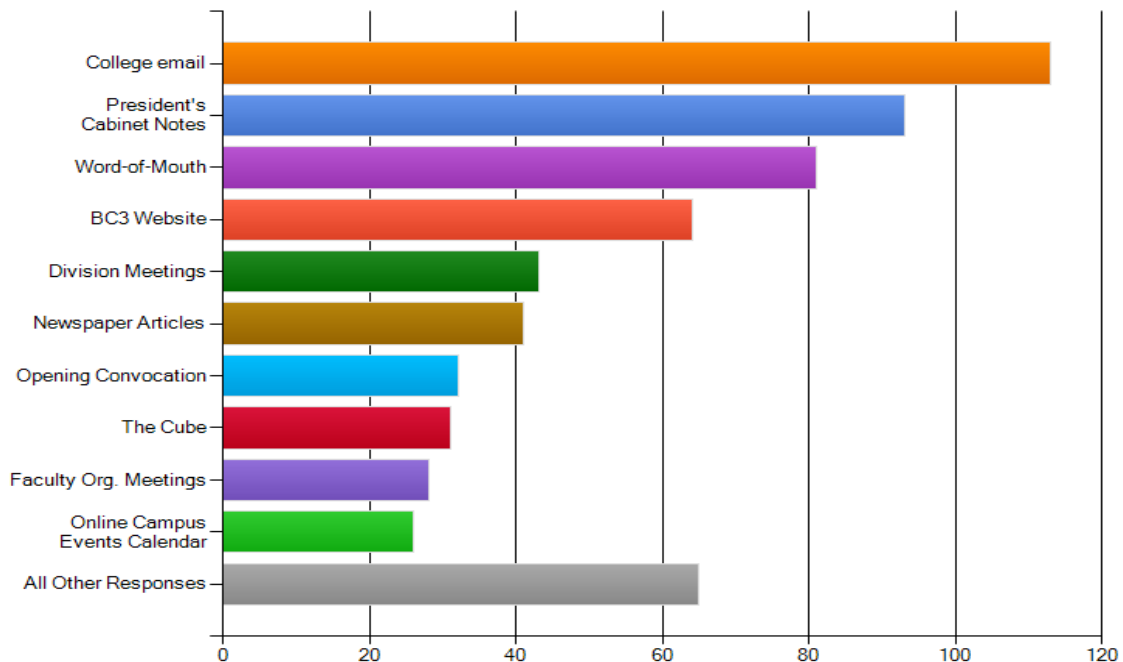
#### 15. BC3 survey of staff and faculty on communication – BC3 (Survey and analyze)

Survey of staff and faculty completed Spring 2011. Results for two questions "How would you rate communications in the BC3 organization in respect to day to day operations, BC3 financial challenges, strategic plan, etc." and "How do you receive your information at BC3" are displayed in the charts below.

#### How would you rate communications in the BC3 organization in respect to the following:

Answer Options	Excellent	Good	Fair	Poor	Very Poor	Response Count
Day to day operations	16	60	25	9	3	113
Financial Challenges	24	60	27	2	0	113
Strategic Plan	29	51	29	4	0	113
Changes in the workplace	15	41	37	14	5	112
BC3 Events	30	47	30	5	2	114
Media portrayal of BC3	27	58	18	8	1	112
External factors that affect BC3	17	46	38	9	0	110
Cabinet and Board Meetings	25	52	29	5	1	112
	<i>answered question</i>					<b>114</b>

#### How do you receive your information at BC3?(select all that apply)



BC3 College Report Card  
2011-2012

**Continuous Improvement**

16. Number of academic programs evaluated and improved -- BC3 (Set a target number and compare)

Forty-one Associate degree programs evaluated at least one program competency during 2011-2012.

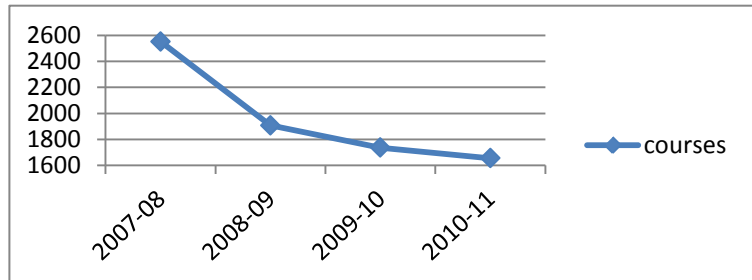
17. Report on activities that increase efficiency—BC3 (Report impact)

Five activities were identified as priorities to increase efficiency: 1. Hiring freeze on new positions, 2. Flatlined department operating budgets except for travel, 3. Summer flex scheduling (4 day work week), 4. Enhance web based services to eliminate labor/paper costs, 5. Refinanced debt to generate net present value savings that will assist in the payment of capital projects

**Community Service**

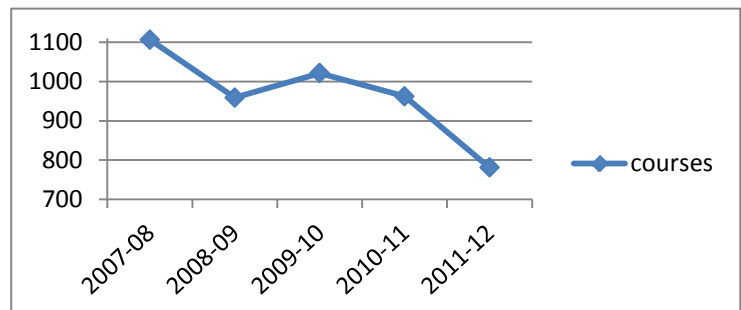
18. Number of noncredit courses run – BC3 (Count courses - trend)

	<u>Count</u>
2007-08	2551
2008-09	1907
2009-10	1736
20010-11	1656
2011-12	1509



19. Number of public safety courses run – BC3 (Count courses – trend)

	<u>Count</u>
2007-08	1106
2008-09	959
2009-10	1021
2010-11	962
2011-12	781



20. Quality of instruction in noncredit courses – BC3 (Survey and analyze)

A sample of course evaluations were reviewed and showed that all non credit instructors included in the sample received at least 85% satisfaction rating.

BC3 College Report Card  
2011-2012

**APPENDIX**

IPEDS Comparison Group

Noel-Levitz Student Satisfaction Inventory National Peer

Community College Survey of Student Engagement National Small College Peer



# IPEDS DATA FEEDBACK REPORT

## COMPARISON GROUP

Comparison group data are included to provide a context for interpreting your institution's statistics. If your institution did not define a Custom Comparison Group for this report by July 15, NCES selected a comparison group for you. (In this case, the characteristics used to define the comparison group appears below.) The Executive Peer Tool (ExPT)(<http://nces.ed.gov/ipeds/datacenter/>) can be used to reproduce the figures in this report using different peer groups.

The custom comparison group chosen by Butler County Community College includes the following 23 institutions:

Bucks County Community College (Newtown, PA)  
Carroll Community College (Westminster, MD)  
Clark State Community College (Springfield, OH)  
Community College of Allegheny County (Pittsburgh, PA)  
Community College of Beaver County (Monaca, PA)  
Community College of Philadelphia (Philadelphia, PA)  
Delaware County Community College (Media, PA)  
Eastern Gateway Community College (Steubenville, OH)  
Frederick Community College (Frederick, MD)  
Hagerstown Community College (Hagerstown, MD)  
Harrisburg Area Community College-Harrisburg (Harrisburg, PA)  
Jamestown Community College (Jamestown, NY)  
Lehigh Carbon Community College (Schnecksville, PA)  
Luzerne County Community College (Nanticoke, PA)  
Montgomery County Community College-Central Campus (Blue Bell, PA)  
Montgomery County Community College-West Campus (Pottstown, PA)  
Northampton County Area Community College (Bethlehem, PA)  
Pennsylvania Highlands Community College (Johnstown, PA)  
Reading Area Community College (Reading, PA)  
Southern State Community College (Hillsboro, OH)  
Stark State College (North Canton, OH)  
Washington State Community College (Marietta, OH)  
Westmoreland County Community College (Youngwood, PA)

**STUDENT SATISFACTION INVENTORY**  
**National Comparison Group**  
**As of May 2011**  
**Community, Junior and Technical Colleges (Form A)**  
Total Personnel Records: 186,038

Allen Community College, KS	Cuyahoga Community College, OH
Anne Arundel Community College, MD	Cypress College, CA
Augusta Technical College, GA	Dakota College at Bottineau, ND
Bay de Noc Community College, MI	Danville Area Community College, IL
Bismarck State College, ND	DeVry Institute of Technology, AB
Blackhawk Technical College, WI	Delaware County Community College, PA
Brazosport College, TX	Delgado Community College, LA
Brookdale Community College, NJ	Delta College, MI
Brookhaven College, TX	Dodge City Community College, KS
Bucks County Community College, PA	Eastern Arizona College, AZ
Burlington County College, NJ	Eastern Gateway Community College, OH
Butler County Community College, PA	Eastern Iowa Community College District, IA
CUNY Borough of Manhattan, NY	Eastern Maine Community College, ME
Canada College, CA	Eastern New Mexico University – Roswell, NM
Cape Cod Community College, MA	Edison Community College, OH
Carl Sandburg College, IL	El Centro College, TX
Carteret Community College, NC	El Paso Community College, TX
Cascadia Community College, WA	Elgin Community College, IL
Catawba Valley Community College, NC	Essex County College, NJ
Cedar Valley College, TX	Estrella Mountain Community College, AZ
Central Georgia Tech College, GA	Flathead Valley Community College, MT
Central New Mexico Community College, NM	Flint Hills Technical, KS
Centralia College, WA	Fort Scott Community College, KS
Century College, MN	Fox Valley Technical College, WI
Chandler-Gilbert Community College, AZ	Galveston College, TX
Chatfield College, OH	Garden City Community College, KS
Cincinnati State Technical College, OH	Gateway Community College, AZ
Clark College, WA	Gateway Community and Technical College, KY
Cloud County Community College, KS	Gateway Technical College, WI
Coffeyville Community College, KS	Georgia Military College, GA
Colby Community College, KS	Glendale Community College, AZ
College of DuPage, IL	Grand Rapids Community College, MI
College of San Mateo, CA	Greenville Technical College, SC
College of the Mainland, TX	Griffin Technical College, GA
Collin County Community College District, TX	Gwinnett Technical College, GA
Community College of Denver, CO	Highland Community College, KS

Total Institutions = 198  
Data from fall 2008 through spring 2011

Hinds Community College, MS  
Illinois Central College, IL  
Independence Community College, KS  
Inver Hills Community College, MN  
Jackson Community College, MI  
Johnson County Community College, KS  
Kankakee Community College, IL  
Kansas City Kansas Community College, KS  
Kansas State University Salina, KS  
Kaskaskia College, IL  
Kennebec Valley Community College, ME  
Kilian Community College, SD  
Lake Land College, IL  
Lake Region State College, ND  
Lake Superior College, MN  
Lakeland College, AB  
Lanier Technical College, GA  
Laredo Community College, TX  
Latter-Day Saints Business, UT  
Lenoir Community College, NC  
Lincoln College, IL  
Lincoln Land Community College, IL  
Little Priest Tribal College, NE  
Luzerne County Community College, PA  
Madison Area Technical College, WI  
Madisonville Community College, KY  
Merritt College, CA  
Mesa Community College, AZ  
Mid Michigan Community College, MI  
Mid-State Technical College, WI  
Mission College, CA  
Mitchell Technical Institute, SD  
Montana State University-Billings, MT  
Montana Tech - South, MT  
Montcalm Community College, MI  
Monterey Peninsula College, CA  
Montgomery County Community College, PA  
Moraine Park Technical College, WI  
Morton College, IL  
Mountain View College, TX  
Navarro College, TX  
New Mexico Junior College, NM  
North Dakota State College of Science, ND  
North Hennepin Community College, MN  
North Lake College, TX  
North Metro Technical College, GA  
Northeastern Junior College, CO  
Northern Maine Community College, ME  
Northwest Technical College, MN  
Northwestern Technical College, GA  
Ohio State University ATI, OH  
Ohio University Lancaster, OH  
Oklahoma State University – Okmulgee, OK  
Owens Community College, OH  
Palo Alto College, TX  
Paradise Valley Community College, AZ  
Passaic County CC, NJ  
Pensacola State College, FL  
Phoenix College, AZ  
Piedmont Community College, NC  
Piedmont Technical College, SC  
Pierpont Community & Technical College, WV  
Pitt Community College, NC  
Portland Community College, OR  
Potomac State College of West Virginia University, WV  
Pratt Community College, KS  
Pulaski Technical College, AR  
Reading Area Community College, PA  
Red Rocks Community College, CO  
Redwoods Community College, CA  
Richland College, TX  
Richland Community College, IL  
Rochester Community & Technical College, MN  
Rockingham Community College, NC  
Rogue Community College, OR  
Saginaw Chippewa Tribal College, MI  
Sandersville Technical College, GA  
Santa Fe Community College, NM  
Sauk Valley Community College, IL  
Savannah Technical College, GA  
Schoolcraft College, MI  
Scottsdale Community College, AZ

Total Institutions = 198

Data from fall 2008 through spring 2011

Seward County Community College, KS  
Sitting Bull College, ND  
Skyline College, CA  
South Central College, MN  
South Mountain Community College, AZ  
Southern Maine Community College, ME  
Southwestern Indian Polytechnic  
Institute, NM  
Spartanburg Community College, SC  
Spokane Falls Community College, WA  
St. Clair County Community College, MI  
St. Luke's College, MO  
Surry Community College, NC  
Tacoma Community College, WA  
Tarrant County College, TX  
Texas State Technical College –  
West Texas, TX  
Texas State Tech College –  
Harlingen, TX  
The Restaurant School, PA  
Tri-County Technical College, SC  
Trident Technical College, SC  
Tyler Junior College, TX  
University of Alaska - Kodiak, AK  
University of Alaska –  
Kenai/Kachemak, AK  
University of Alaska-Mat-Su, AK  
University of Alaska-Prince, AK  
University of Akron-Wayne College, OH  
University of Arkansas Community  
College Batesville, AR  
University of Cincinnati-Raymond, OH  
University of Hawaii Kauai Community  
College, HI  
University of Montana-Helena  
College, MT  
University of Wisconsin –  
Marshfield/Wood, WI  
Volunteer State Community College, TN  
Warren County Community College, NJ  
Washington County Community  
College, ME  
West Virginia University at  
Parkersburg, WV  
Western Dakota Technical Institute, SD  
Western Nevada College, NV

Western Technical College, WI  
White Earth Tribal & Community  
College, MN  
Wichita Area Technical College, KS  
Williston State College, ND  
Wisconsin Indianhead Technical, WI  
Wright State University Lake  
Campus, OH  
Yavapai College, AZ  
York County Community College, ME

Total Institutions = 198

Data from fall 2008 through spring 2011

**CCSSE Cohort  
Comparison Groups- Small Colleges**

<b>Institution</b>	<b>City</b>	<b>State</b>	<b>Most Recent Year of Participation</b>
Abraham Baldwin Agricultural College	Tifton	GA	2011
Aiken Technical College	Graniteville	SC	2012
Alexandria Technical & Community College	Alexandria	MN	2011
Allegany College of Maryland	Cumberland	MD	2012
Ancilla College	Donaldson	IN	2010
Anoka Technical College	Anoka	MN	2011
Arkansas Northeastern College	Blytheville	AR	2012
Arkansas State University - Beebe	Beebe	AR	2012
Arkansas State University Mountain Home	Mountain Home	AR	2011
Arkansas State University-Newport	Newport	AR	2012
Ashland Community and Technical College	Ashland	KY	2012
Asnuntuck Community College	Enfield	CT	2011
Atlanta Metropolitan College	Atlanta	GA	2011
Atlanta Technical College	Atlanta	GA	2012
Bainbridge College	Bainbridge	GA	2011
Barstow Community College	Barstow	CA	2011
Bay de Noc Community College	Escanaba	MI	2011
Bellingham Technical College	Bellingham	WA	2012
Belmont Technical College	St. Clairsville	OH	2012
Berkshire Community College	Pittsfield	MA	2011
Bermuda College	Paget	BM	2012
Big Bend Community College	Moses Lake	WA	2012
Bismarck State College	Bismarck	ND	2011
Black River Technical College	Pocahontas	AR	2012
Blue Mountain Community College	Pendleton	OR	2011
Blue Ridge Community and Technical College	Martinsburg	WV	2011
Bow Valley College	Calgary	AB	2012
Brazosport College	Lake Jackson	TX	2012
Bridgemont Community and Technical College	Montgomery	WV	2011
Butler County Community College	Butler	PA	2012
Cape Cod Community College	West Barnstable	MA	2011
Capital Area Technical College	Baton Rouge	LA	2011
Capital Community College	Hartford	CT	2011
Carolinas College of Health Sciences	Charlotte	NC	2011
Carroll Community College	Westminster	MD	2012
Carteret Community College	Morehead City	NC	2011
Cascadia Community College	Bothell	WA	2012
Casper College	Casper	WY	2011
Cecil College	North East	MD	2012
Central Lakes College	Brainerd	MN	2012
Central Maine Community College	Auburn	ME	2011
Central Ohio Technical College	Newark	OH	2011
Central Wyoming College	Riverton	WY	2011

**CCSSE Cohort**  
**Comparison Groups- Small Colleges**

Centralia College	Centralia	WA	2012
Chesapeake College	Wye Mills	MD	2012
Chipola College	Marianna	FL	2012
Clarendon College	Clarendon	TX	2012
Clatsop Community College	Astoria	OR	2011
Cleveland Community College	Shelby	NC	2011
Cleveland State Community College	Cleveland	TN	2012
Clinton Community College	Plattsburgh	NY	2012
Coastal Bend College	Beeville	TX	2012
College of Coastal Georgia	Brunswick	GA	2011
College of Menominee Nation	Keshena	WI	2011
College of The Albemarle	Elizabeth City	NC	2011
College of the Mainland	Texas City	TX	2011
College of the Ouachitas	Malvern	AR	2012
College of the Siskiyous	Weed	CA	2011
Columbia College	Calgary	AB	2011
Columbia Gorge Community College	The Dalles	OR	2011
Community College of Beaver County	Monaca	PA	2012
Community College of the District of Columbia	Washington	DC	2011
Cossatot Community College of the University of Arkansas	De Queen	AR	2012
Craven Community College	New Bern	NC	2012
Cumberland County College	Vineland	NJ	2010
Dakota College at Bottineau	Bottineau	ND	2011
Dakota County Technical College	Rosemount	MN	2012
Danville Area Community College	Danville	IL	2012
Davidson County Community College	Lexington	NC	2011
Delaware College of Art and Design	Wilmington	DE	2012
Delaware Technical & Community College - Owens Campus	Dover	DE	2011
Delaware Technical & Community College - Terry Campus	Dover	DE	2011
Denmark Technical College	Denmark	SC	2010
Donnelly College	Kansas City	KS	2012
Dyersburg State Community College	Dyersburg	TN	2011
East Arkansas Community College	Forrest City	AR	2010
East Central College	Union	MO	2011
East Central Community College	Decatur	MS	2011
East Georgia College	Swainsboro	GA	2012
Eastern Gateway Community College	Steubenville	OH	2012
Eastern Maine Community College	Bangor	ME	2011
Eastern New Mexico University - Roswell	Roswell	NM	2012
Eastern Shore Community College	Melfa	VA	2010
Eastern West Virginia Community & Technical College	Moorefield	WV	2011
Eastern Wyoming College	Torrington	WY	2011
Edison State Community College	Piqua	OH	2011
Ellsworth Community College	Iowa Falls	IA	2011
Fletcher Technical Community College	Houma	LA	2012
Florida Keys Community College	Key West	FL	2010
Fond du Lac Tribal and Community College	Cloquet	MN	2011
Frank Phillips College	Borger	TX	2012

**CCSSE Cohort  
Comparison Groups- Small Colleges**

Galveston College	Galveston	TX	2012
Garden City Community College	Garden City	KS	2012
Garrett College	McHenry	MD	2012
Goodwin College	East Hartford	CT	2012
Grays Harbor College	Aberdeen	WA	2011
Great Bay Community College	Portsmouth	NH	2011
Great Falls College MSU	Great Falls	MT	2012
Greenfield Community College	Greenfield	MA	2011
Hagerstown Community College	Hagerstown	MD	2010
Halifax Community College	Weldon	NC	2011
Harrisburg Area Community College - Gettysburg Campus	Harrisburg	PA	2012
Harrisburg Area Community College - Lebanon Campus	Harrisburg	PA	2012
Harrisburg Area Community College - York Campus	Harrisburg	PA	2012
Hawaii Community College	Hilo	HI	2012
Henderson Community College	Henderson	KY	2012
Herkimer County Community College	Herkimer	NY	2012
Hesston College	Hesston	KS	2012
Hibbing Community College	Hibbing	MN	2011
Highland Community College	Highland	KS	2012
Hopkinsville Community College	Hopkinsville	KY	2011
Howard College	Big Spring	TX	2012
Indian Hills Community College	Ottumwa	IA	2011
Institute for Extended Learning	Spokane	WA	2011
Isothermal Community College	Spindale	NC	2012
Itasca Community College	Grand Rapids	MN	2011
Ivy Tech Community College - Anderson	Muncie	IN	2011
Ivy Tech Community College - East Chicago	Gary	IN	2011
Ivy Tech Community College - Elkhart	South Bend	IN	2011
Ivy Tech Community College - Gary	Gary	IN	2011
Ivy Tech Community College - Kokomo	Kokomo	IN	2011
Ivy Tech Community College - Lawrenceburg	Lawrenceburg	IN	2011
Ivy Tech Community College - Logansport	Kokomo	IN	2011
Ivy Tech Community College - Madison	Lawrenceburg	IN	2011
Ivy Tech Community College - Marion	Muncie	IN	2011
Ivy Tech Community College - Michigan City	Gary	IN	2011
Ivy Tech Community College - Richmond	Richmond	IN	2011
Ivy Tech Community College - Valparaiso	Gary	IN	2011
Ivy Tech Community College - Warsaw	South Bend	IN	2011
James Sprunt Community College	Kenansville	NC	2011
John Wood Community College	Quincy	IL	2012
Kanawha Valley Community and Technical College	Institute	WV	2011
Kankakee Community College	Kankakee	IL	2011
Kauai Community College	Lihue	HI	2012
Kennebec Valley Community College	Fairfield	ME	2011
Kirtland Community College	Roscommon	MI	2010
Klamath Community College	Klamath Falls	OR	2011
Labette Community College	Parsons	KS	2010
Laboure College	Boston	MA	2011

**CCSSE Cohort**  
**Comparison Groups- Small Colleges**

Lake Michigan College	Benton Harbor	MI	2010
Lake Region State College	Devils Lake	ND	2011
Lake Tahoe Community College	South Lake Tahoe	CA	2012
Lake Washington Institute of Technology	Kirkland	WA	2011
Lakes Region Community College	Laconia	NH	2011
Lamar Community College	Lamar	CO	2011
Lamar Institute of Technology	Beaumont	TX	2012
Lamar State College - Orange	Orange	TX	2011
Lawson State Community College	Birmingham	AL	2012
Linn State Technical College	Linn	MO	2012
Louisburg College	Louisburg	NC	2012
Louisiana Delta Community College	Monroe	LA	2011
Lower Columbia College	Longview	WA	2010
M State Detroit Lakes Campus	Fergus Falls	MN	2011
M State Fergus Falls Campus	Fergus Falls	MN	2011
M State Moorhead Campus	Fergus Falls	MN	2011
M State Wadena Campus	Fergus Falls	MN	2011
Madison Area Technical College - Commercial Ave. Educ. Center	Madison	WI	2011
Madison Area Technical College - Downtown Education Center	Madison	WI	2011
Madison Area Technical College - East	Madison	WI	2011
Madison Area Technical College - North	Madison	WI	2011
Madison Area Technical College - South	Madison	WI	2011
Madison Area Technical College - West	Madison	WI	2011
Manchester Community College	Manchester	NH	2011
Marion Technical College	Marion	OH	2011
Marshalltown Community College	Marshalltown	IA	2011
Martin Community College	Williamston	NC	2011
Mayland Community College	Spruce Pine	NC	2012
Maysville Community & Technical College	Maysville	KY	2011
Mesabi Range Community and Technical College	Virginia	MN	2011
Mid-Plains Community College	North Platte	NE	2011
Middle Georgia College	Cochran	GA	2011
Middlesex Community College	Middletown	CT	2011
Minnesota West - Canby	Worthington	MN	2011
Minnesota West - Granite Falls	Worthington	MN	2011
Minnesota West - Jackson	Worthington	MN	2011
Minnesota West - Pipestone	Worthington	MN	2011
Minnesota West - Worthington	Worthington	MN	2011
Mississippi Delta Community College	Moorhead	MS	2012
Missouri State University-West Plains	West Plains	MO	2011
MN State College - Southeast Technical	Winona	MN	2012
Montana State University Billings College of Technology	Billings	MT	2011
Morgan Community College	Fort Morgan	CO	2011
Mountwest Community and Technical College	Huntington	WV	2011
Nashua Community College	Nashua	NH	2011
National Park Community College	Hot Springs	AR	2012
Neosho County Community College	Chanute	KS	2011



**CCSSE Cohort**  
**Comparison Groups- Small Colleges**

New Mexico Junior College	Hobbs	NM	2010
New Mexico State University - Grants	Grants	NM	2011
New Mexico State University at Alamogordo	Alamogordo	NM	2011
New River Community and Technical College	Beckley	WV	2011
NHTI - Concord's Community College	Concord	NH	2011
North Arkansas College	Harrison	AR	2012
North Central Michigan College	Petoskey	MI	2012
North Central Missouri College	Trenton	MO	2012
North Central State College	Mansfield	OH	2011
North Country Community College	Saranac Lake	NY	2012
North Dakota State College of Science	Wahpeton	ND	2011
North Florida Community College	Madison	FL	2011
North Iowa Area Community College	Mason City	IA	2011
Northeast Texas Community College	Mt Pleasant	TX	2011
Northeastern Technical College	Cheraw	SC	2012
Northern Maine Community College	Presque Isle	ME	2011
Northern Marianas College	Saipan	MP	2011
Northern Wyoming Community College District	Sheridan	WY	2011
Northland Community and Technical College	Thief River Falls	MN	2012
Northwest College	Powell	WY	2011
Northwest Indian College	Bellingham	WA	2011
Northwest Iowa Community College	Sheldon	IA	2011
Northwest State Community College	Archbold	OH	2011
Northwest Technical College	Bemidji	MN	2012
Northwest-Shoals Community College	Muscle Shoals	AL	2010
Northwestern Connecticut Community College	Winsted	CT	2011
Olive-Harvey College	Chicago	IL	2011
Oregon Coast Community College	Newport	OR	2011
Ozarka College	Melbourne	AR	2012
Panola College	Carthage	TX	2010
Patrick Henry Community College	Martinsville	VA	2012
Paul D. Camp Community College	Franklin	VA	2012
Phillips Community College of the University of Arkansas	Helena-West Helena	AR	2012
Pierpont Community and Technical College	Fairmont	WV	2011
Pine Technical College	Pine City	MN	2012
Portland Community College -Extended Learning Campus	Portland	OR	2011
Potomac State College of West Virginia University	Keyser	WV	2012
Quincy College	Quincy	MA	2010
Quinebaug Valley Community College	Danielson	CT	2011
Rainy River Community College	Hibbing	MN	2011
Ranger College	Ranger	TX	2012
Redlands Community College	El Reno	OK	2012
Renton Technical College	Renton	WA	2012
Rhodes State College	Lima	OH	2012
Rich Mountain Community College	Mena	AR	2012
Richard Bland College of The College of William and Mary	Petersburg	VA	2012
Ridgewater College	Willmar	MN	2012
Rio Grande Community College	Rio Grande	OH	2012

**CCSSE Cohort  
Comparison Groups- Small Colleges**

River Parishes Community College	Sorrento	LA	2011
River Valley Community College	Claremont	NH	2011
Riverland Community College	Austin	MN	2011
Roanoke-Chowan Community College	Ahoskie	NC	2012
Robeson Community College	Lumberton	NC	2011
Roxbury Community College	Roxbury	MA	2011
Salem Community College	Carneys Point	NJ	2012
Salish Kootenai College	Pablo	MT	2012
Seminole State College	Seminole	OK	2011
Seward County Community College Area Technical School	Liberal	KS	2011
Sitting Bull College	Fort Yates	ND	2012
Snead State Community College	Boaz	AL	2011
Snow College	Ephraim	UT	2012
South Arkansas Community College	El Dorado	AR	2012
South Central College	North Mankato	MN	2011
South Florida Community College	Avon Park	FL	2011
South Georgia College	Douglas	GA	2011
South Louisiana Community College	Lafayette	LA	2012
South Piedmont Community College	Monroe	NC	2012
Southeast Arkansas College	Pine Bluff	AR	2012
Southeastern Community College	West Burlington	IA	2011
Southeastern Community College	Whiteville	NC	2010
Southeastern Technical College	Vidalia	GA	2011
Southern Arkansas University Tech	Camden	AR	2012
Southern State Community College	Hillsboro	OH	2011
Southern University at Shreveport	Shreveport	LA	2010
Southern West Virginia Community and Technical College	Mt. Gay	WV	2011
Southwestern Oregon Community College	Coos Bay	OR	2011
SOWELA Technical Community College	Lake Charles	LA	2012
Spoon River College	Canton	IL	2010
St. Cloud Technical and Community College	St. Cloud	MN	2011
St. Louis Community College at Wildwood	St. Louis	MO	2012
Surry Community College	Dobson	NC	2012
Taft College	Taft	CA	2012
Technical College of the Lowcountry	Beaufort	SC	2012
Terra Community College	Fremont	OH	2012
Texas State Technical College Marshall	Marshall	TX	2012
Texas State Technical College West Texas	Sweetwater	TX	2010
Three Rivers Community College	Poplar Bluff	MO	2011
Tillamook Bay Community College	Tillamook	OR	2011
Tompkins Cortland Community College	Dryden	NY	2012
Treasure Valley Community College	Ontario	OR	2011
Tri-County Community College	Murphy	NC	2011
Tunxis Community College	Farmington	CT	2011
UH Maui College	Kahului	HI	2012
Umpqua Community College	Roseburg	OR	2011
University of Akron Wayne College	Orrville	OH	2012
University of Alaska Fairbanks Community and Technical College	Fairbanks	AK	2010

**CCSSE Cohort**  
**Comparison Groups- Small Colleges**

University of Arkansas Community College at Batesville	Batesville	AR	2012
University of Arkansas Community College at Hope	Hope	AR	2012
University of Arkansas Community College at Morrilton	Morrilton	AR	2012
University of Montana-Helena College of Technology	Helena	MT	2011
University of New Mexico - Valencia Campus	Los Lunas	NM	2012
Vance-Granville Community College	Henderson	NC	2012
Vermilion Community College	Ely	MN	2011
Vernon College	Vernon	TX	2011
Warren County Community College	Washington	NJ	2012
Washington County Community College	Calais	ME	2011
Washington State Community College	Marietta	OH	2011
Waycross College	Waycross	GA	2011
Wenatchee Valley College	Wenatchee	WA	2010
West Hills College Coalinga	Coalinga	CA	2011
West Hills College Lemoore	Lemoore	CA	2011
West Shore Community College	Scottville	MI	2011
West Virginia Northern Community College	Wheeling	WV	2011
West Virginia University at Parkersburg	Parkersburg	WV	2011
Western Colorado Community College	Grand Junction	CO	2011
Western Nebraska Community College	Scottsbluff	NE	2011
Western Texas College	Snyder	TX	2011
Western Wyoming Community College	Rock Springs	WY	2011
Whatcom Community College	Bellingham	WA	2010
White Mountains Community College	Berlin	NH	2011
Wilkes Community College	Wilkesboro	NC	2012
Williamsburg Technical College	Kingstree	SC	2012
Williston State College	Williston	ND	2011
Windward Community College	Kaneohe	HI	2012
Wisconsin Indianhead Technical College	Shell Lake	WI	2011
Wor-Wic Community College	Salisbury	MD	2012
York County Community College	Wells	ME	2011
Zane State College	Zanesville	OH	2012